



Hans Schiphorst,
Secretary SNP board, the dutch
umbrella organisation of national parks

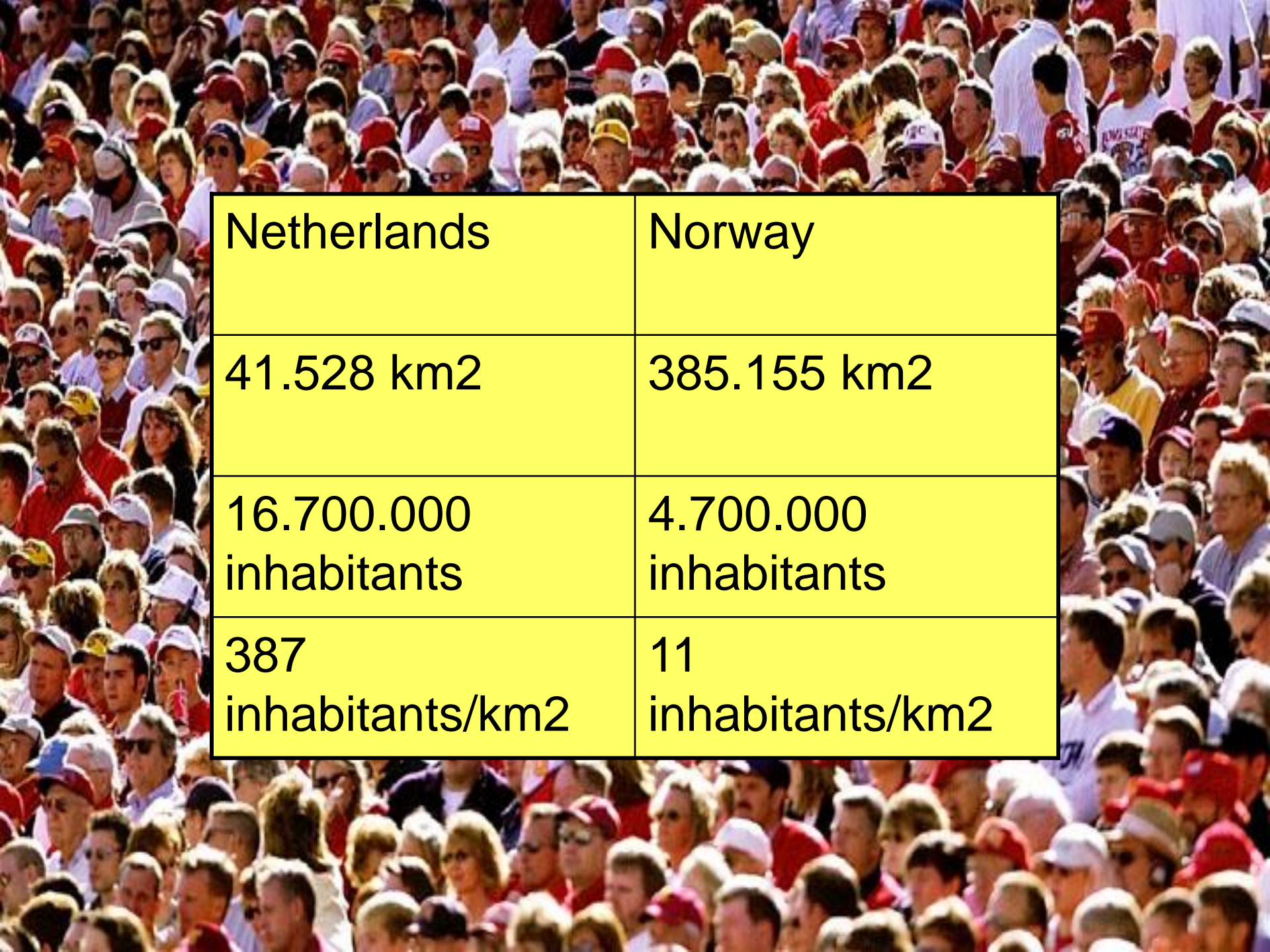


visitormanagement

a **customer** based strategy with a balance between:

- customer demands
- the tourism product
- people living there
- maintaining or enhancing the quality of nature
- **it needs a coordinated approach**
- **every tourism entrepreneur is a host and ambassador**





Netherlands	Norway
41.528 km ²	385.155 km ²
16.700.000 inhabitants	4.700.000 inhabitants
387 inhabitants/km ²	11 inhabitants/km ²



Voorburg
Den Haag
A13

E19 E30 GN
Delft
Rijswijk
Den Haag-Zuid
Leidschendam
Amsterdam
A4 A13

23-HZ-VR











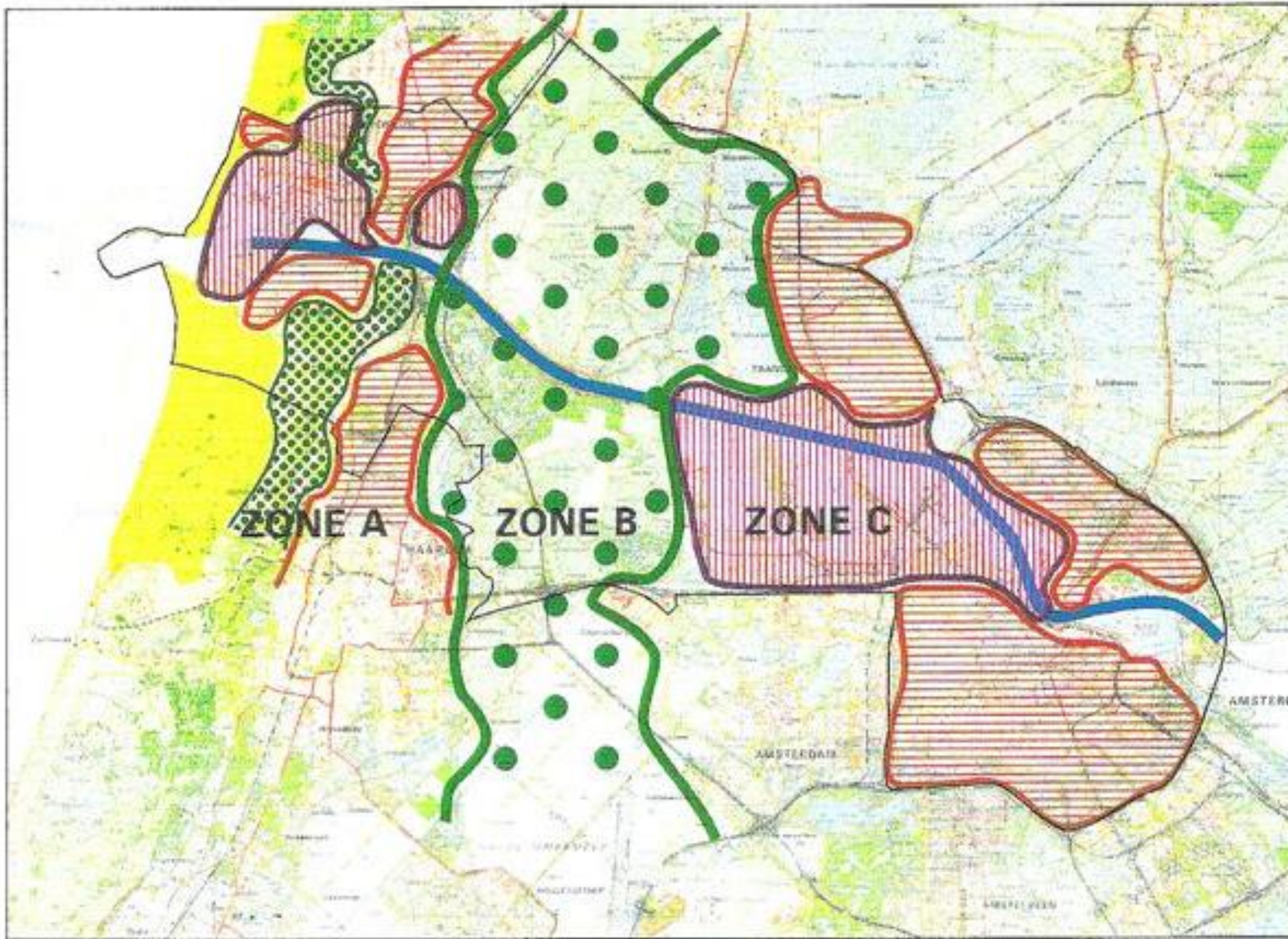


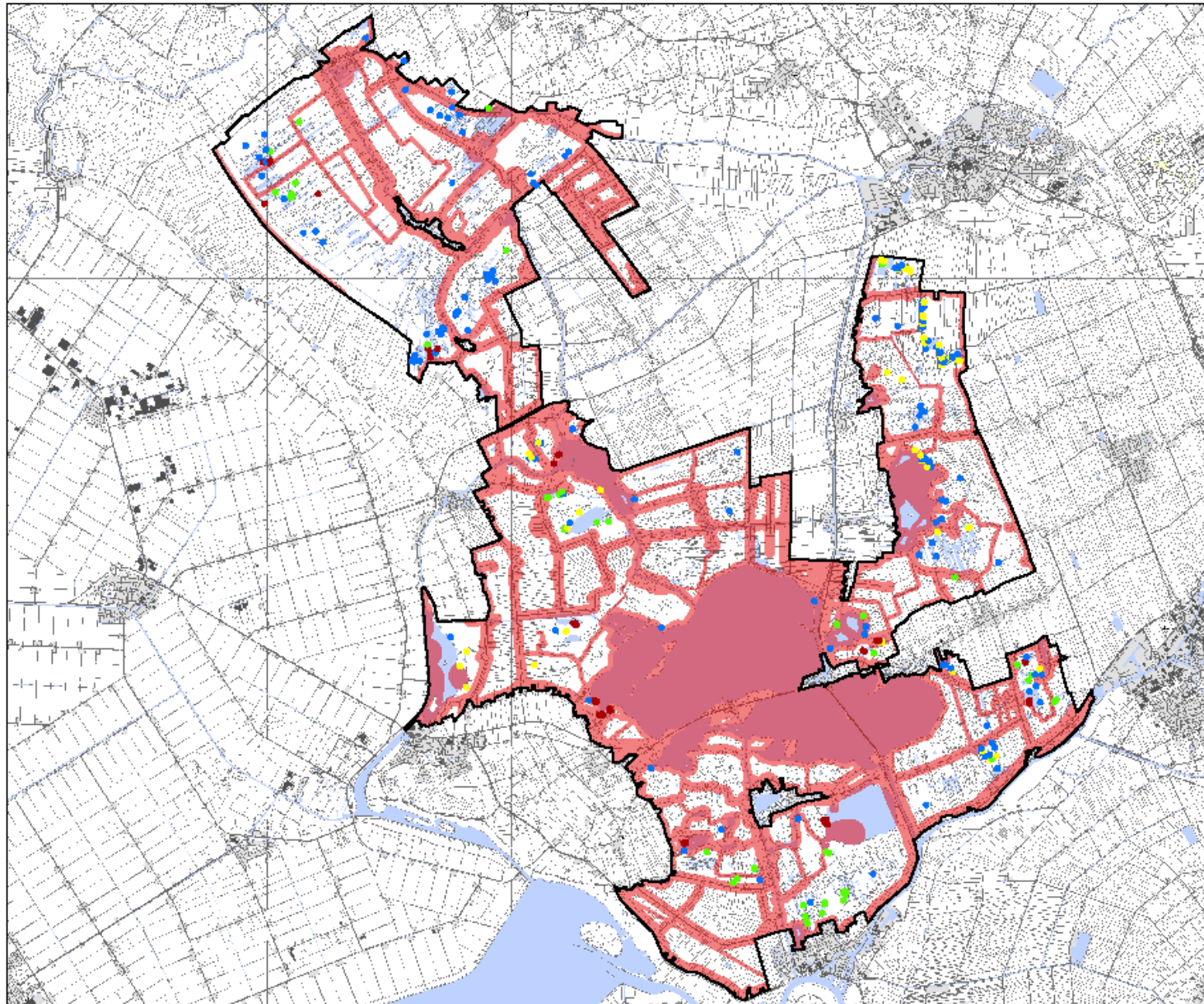
N
Nationaal Park
De Weerribben

(KP-2)



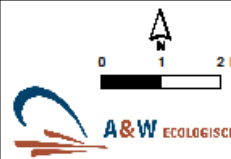




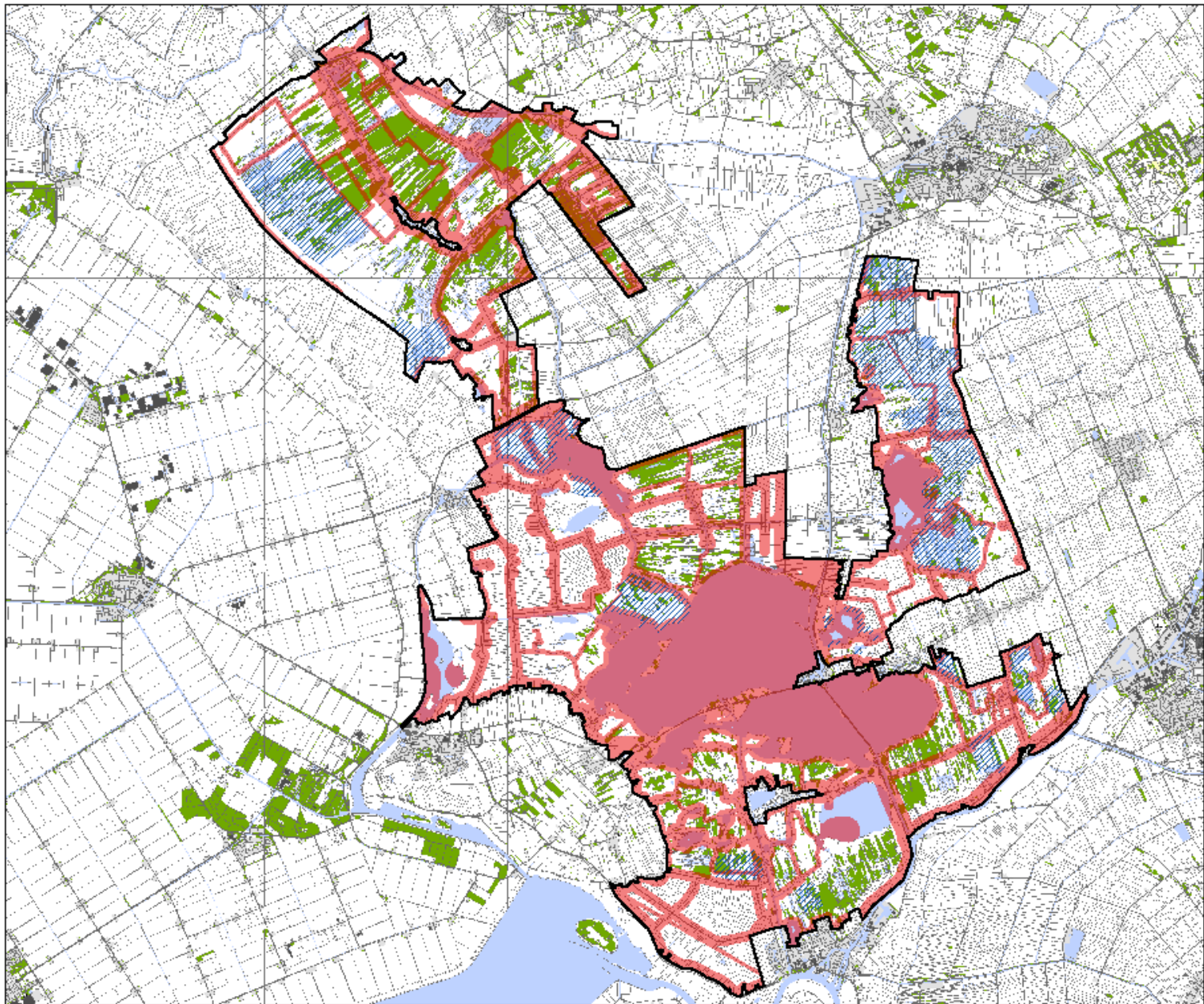


**Confrontatiekaart
verstoringgevoelige moer
2003-2007**

- Brune Kiekendief
- Purperreiger
- Roerdomp
- Zwarte Stern
- verstoringzones langs (vaar)w
paden in april-oktober
- Natura2000-gebied
(De Wieden en De Weertiben)



A&W-rapport: 1146
tek.nr.: 1248-035a/23012009/ld
topografie: TD Kadaster



Rustgebiedenkaart

-  rustgebied
-  verstoringzones langs (vaar)wegen en paden in april-oktober
-  Natura2000-gebied (De Wieden en De Weerribben)



A&W-rapport: 1146
teknr.: 1246-033a/23012006/ld
topografie: TD Kadaster





Max. 400/hr.











Powered by DIYTrade.com





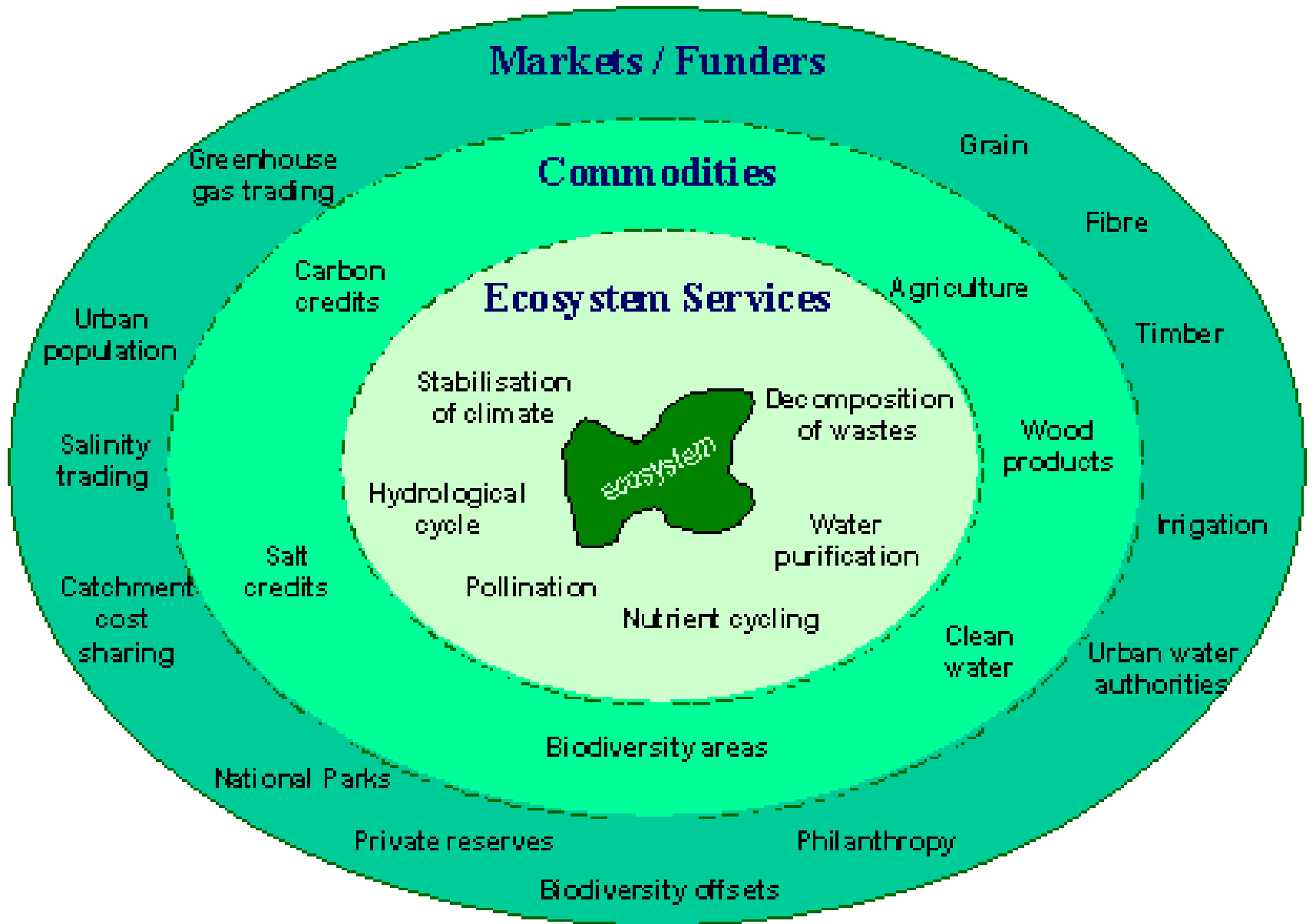






I think it's beautiful here, because there is a restaurant





visitors contribution for management:

running courses

payback schemes

tourism taxes

etc.



