



Management of the National Park Lower Saxon Wadden Sea

Thea Hamm | Siggen Seminar | NLPV | 05.03.2024



Nationalpark
Wattenmeer
NIEDERSACHSEN





Esbjerg, DK

Den Helder,
NL

14 900 km² Wadden
Sea area

From Denmark to the
Netherlands



Tidal mudflats

Nationalpark
Wattenmeer
NIEDERSACHSEN





More productive than
a tropical rain forest



Home to many



- Food for many:
- Grey seal
 - Harbour seal
 - Harbour porpoise





Esbjerg, DK

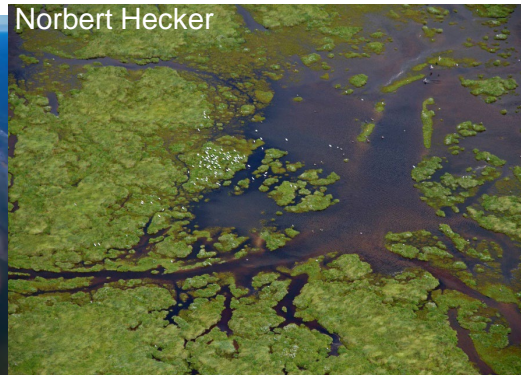
National Park Lower
Saxon Wadden Sea

Den Helder,
NL

- 3450 km²
National Park in
Lower Saxony
- Mudflats: 1 381
km²
- Water: 1886km²
- Islands and dry
land: 191 km²

Main drivers and conservation objectives

Unique habitat, important for thousands of species



Legal and governance considerations

National Park Lower Saxon Wadden Sea


National Law

- Lower Saxon Wadden Sea National Park Law: NWattNPG
„... to preserve the special characteristics of nature and the landscape of the wadden sea (...) and natural dynamics of the habitat types. The biological diversity of flora and fauna in the area of the national park should be preserved...“

Trilateral collaboration

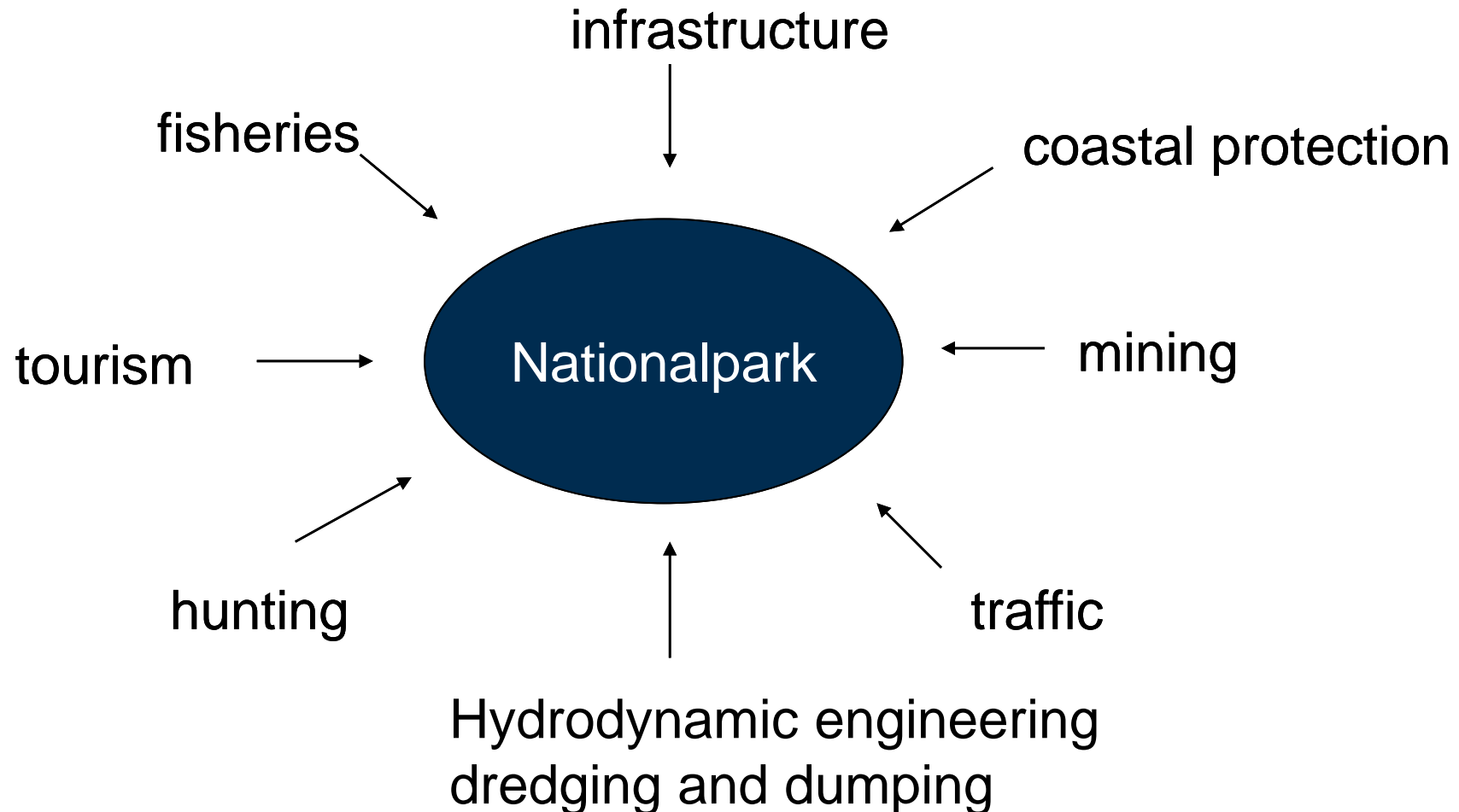
- Trilateral wadden sea cooperation (TWSC, since 1978) managed by the Common Wadden Sea Secretariat (CWSS)

International Guidelines

- Marine Strategy Framework Directive (MSFD)
- Habitats Directive (FFH) → Natura2000 areas
- Birds Directive 

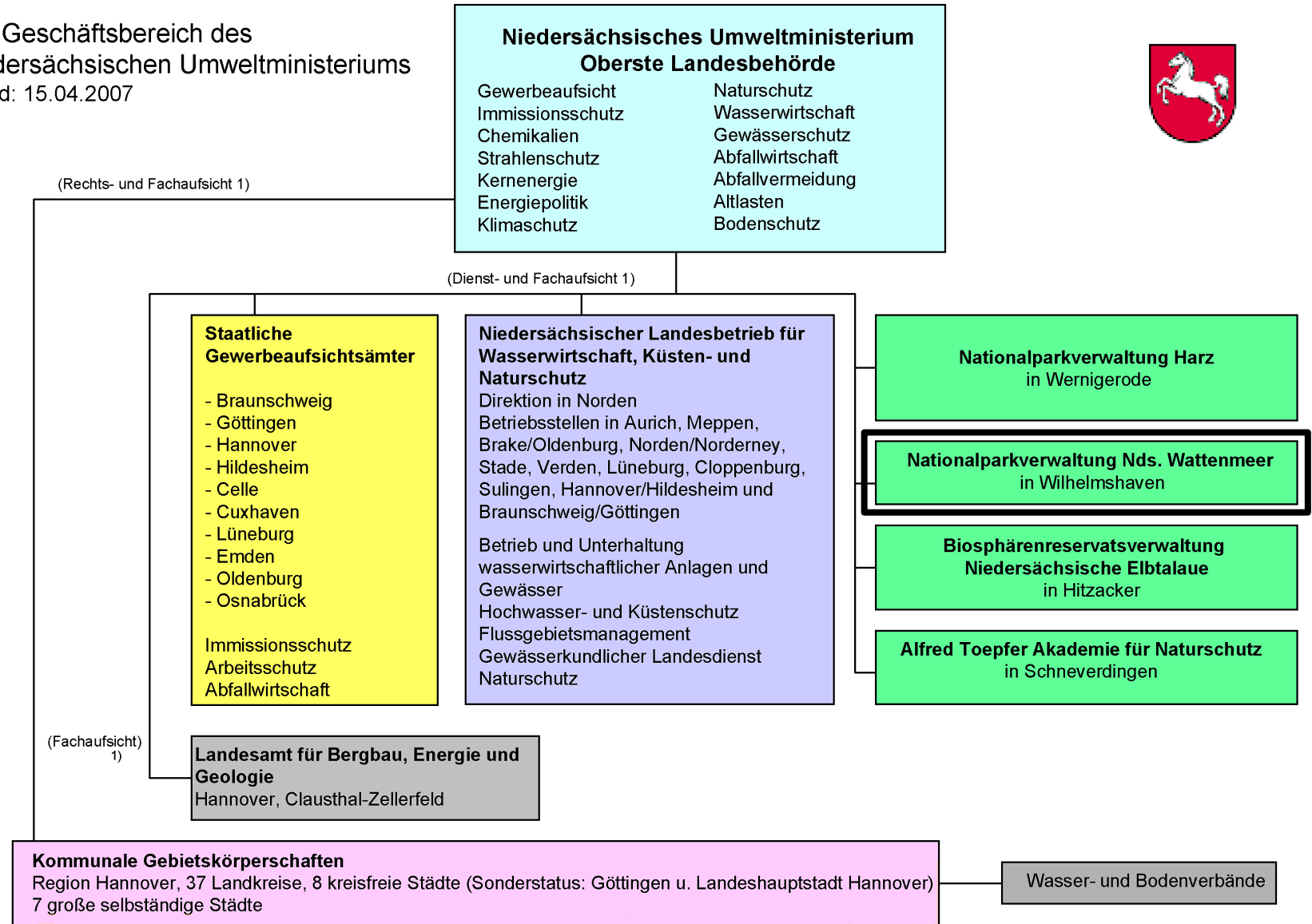
Socio-economic context and stakeholders

National Park Lower Saxon Wadden Sea



Organization

Der Geschäftsbereich des
Niedersächsischen Umweltministeriums
Stand: 15.04.2007



1) Nur soweit Aufgaben aus dem Geschäftsbereich des Nds. Umweltministeriums wahrgenommen werden.

Organization

Staff, rangers and volunteers

Staff responsible for certain regions



Staff responsible for certain topics
e.g. fisheries, birds,...

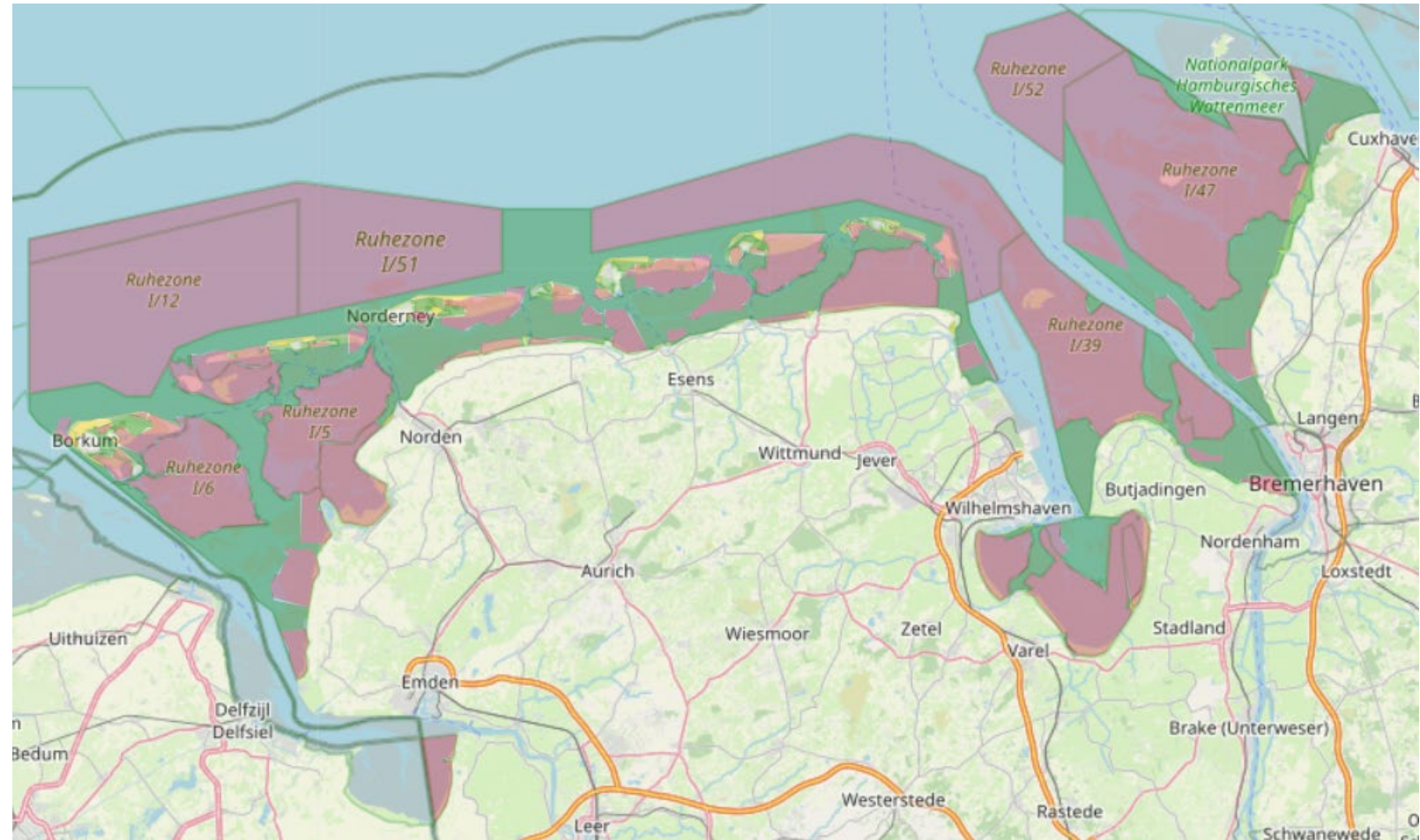


Rangers



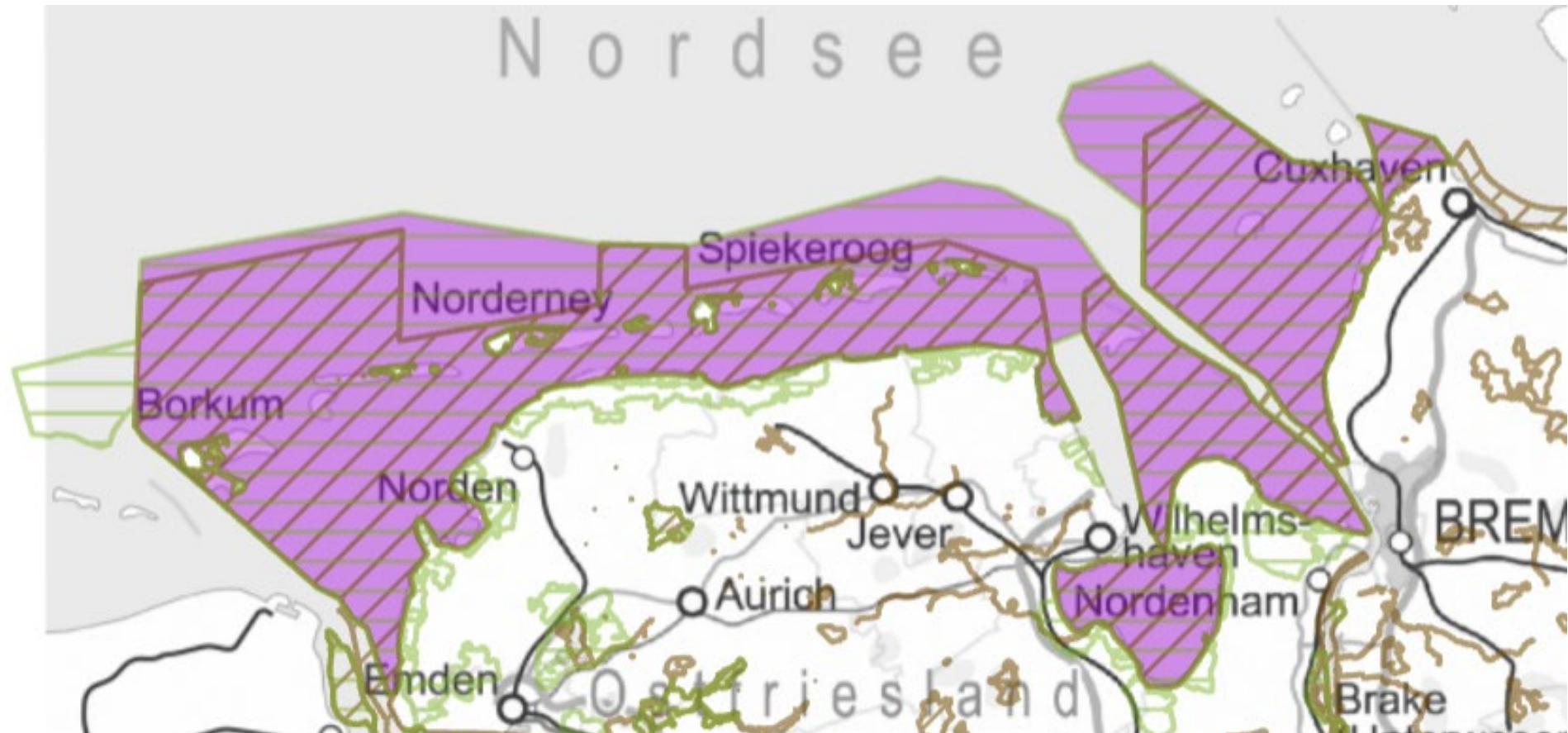
National Park area and zoning

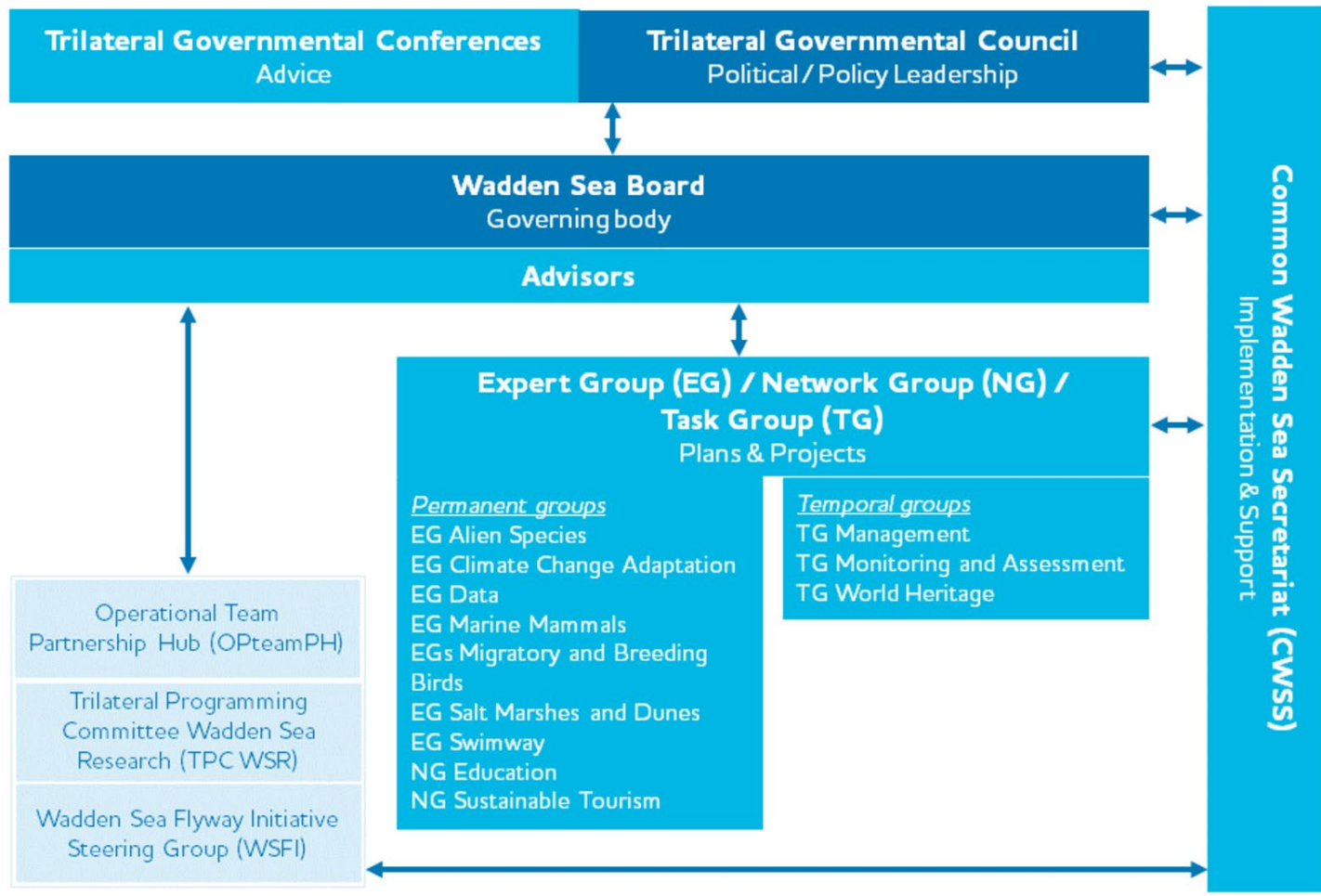
Zone	Km ²	% of NP
Restricted Zone	2369,6	68,59
Intermediate Zone	1071,8	31,02
Recreational Zone	17	0,49



Overlapping areas

- Violet: Nationalpark
- Brown lines: habitat directive site
- Green lines: birds directive site





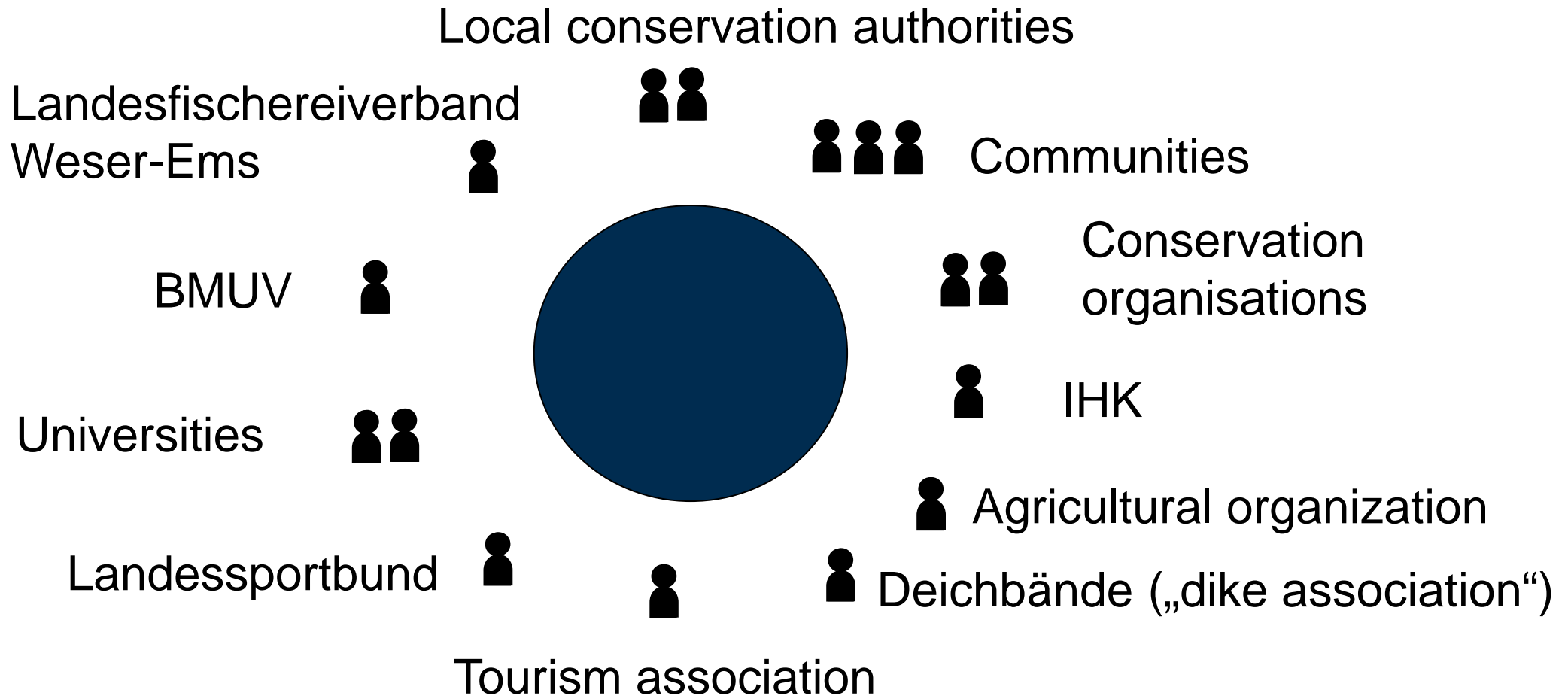
THE SIMP

INTEGRATED MANAGEMENT PLAN FOR ONE WADDEN SEA WORLD HERITAGE



Participatory processes

National Park Lower Saxon Wadden Sea



Management Effectiveness Assessment processes

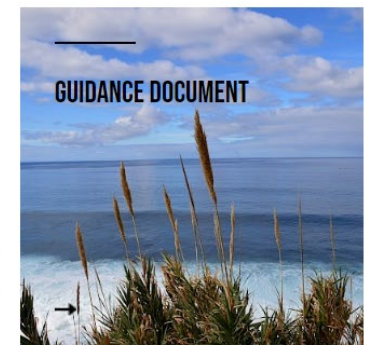
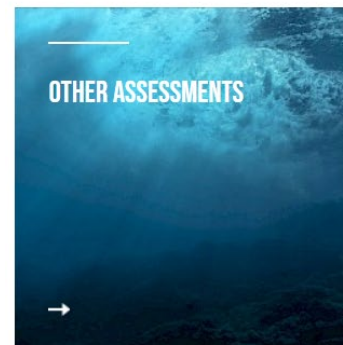
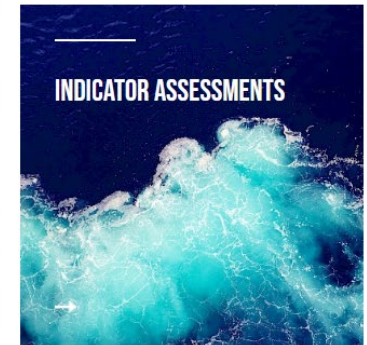
International guidelines set the pace

- International guidelines require reports in a 6 year cycle
- Determine status
- Formulate goals
- Develop measurements to achieve goals
- Monitor if goals are achieved



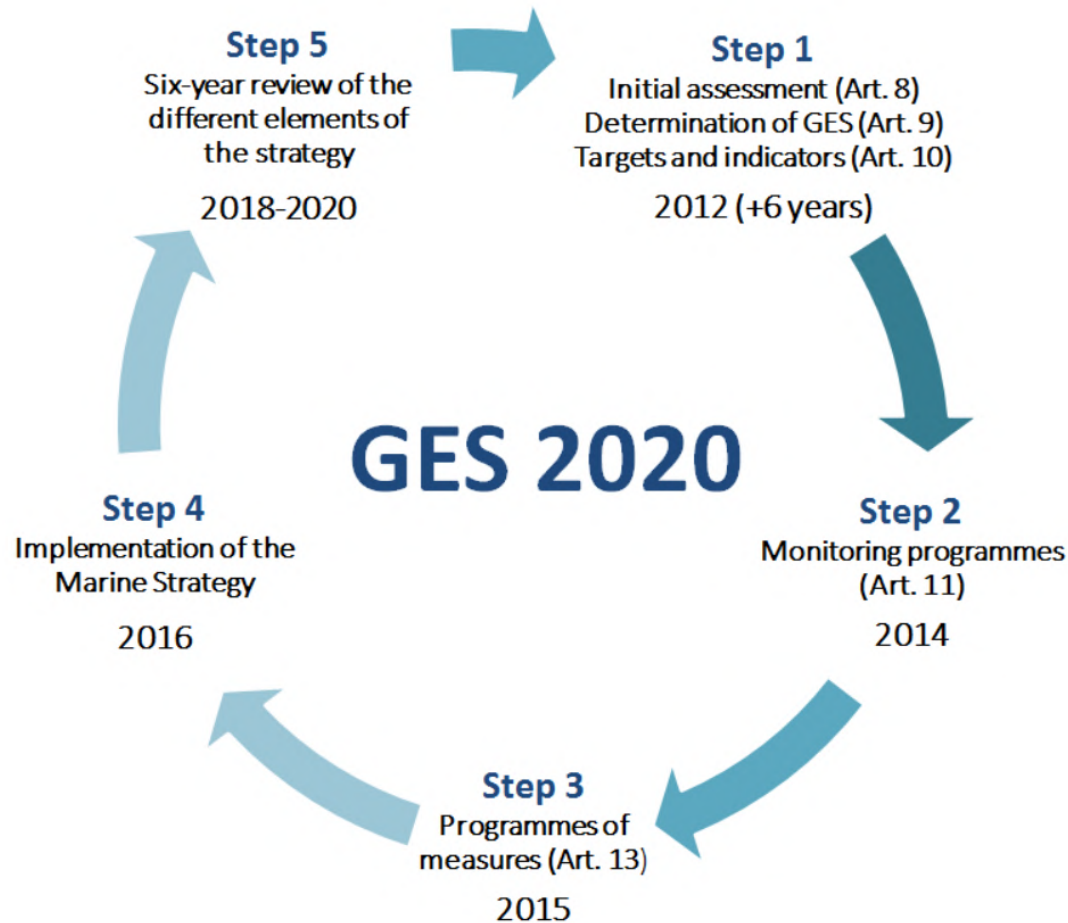
Wadden Sea Quality Status Report

Climate change



Management Effectiveness Assessment processes

International guidelines set the pace



Common implementation strategy

Second implementation cycle (2018 – 2023)

Implementation report and state of the seas

First implementation cycle (2012 – 2017)

Thank you for your attention



Questions?

Marko Koenig